

First Avenue, The Pensnett Estate, Kingswinford, West Midlands, DY6 7TZ, England  
web: [www.garlandproducts.com](http://www.garlandproducts.com) email: [sales@garlandproducts.com](mailto:sales@garlandproducts.com)  
Tel: +44 (0) 1384 278256 Fax: +44 (0) 1384 400091

## DECLARATION OF CONFORMITY

This is to confirm that the following item conforms with essential health and safety requirements.

### Description of Product:

Grow Light Garden LED Black  
Product Code: G262B



### Relevant regulations complied with by the product:

*Low Voltage Directive 2014/35/EU*

*Electro Magnetic Compatibility Directive 2014/30/EU*

*CE Marking Directive 93/68/EEC*

*RoHS Directive 2011/65/EU*

*This company also holds WEEECare Compliance Certificate No. WEE/FC0105WV*

**We declare that this unit has been manufactured in accordance with the above referred Directives, complies with the safety requirements of BS EN 60335-1:2012+A13:2017 and is therefore considered to comply with The Electrical Equipment (Safety) Regulations – 2016.**

### **Business name and address:**

As Above

### **EU Authorised Representative:**

International Associates Auditing & Certification Limited  
The Black Church, St Mary's Place,  
Dublin 7, D07 P4AX Ireland  
Email: [EUA@ie.ia-net.com](mailto:EUA@ie.ia-net.com)

Authorised person empowered to sign for the company:

A handwritten signature in black ink, appearing to read 'H M Glendenning', written in a cursive style.

H M Glendenning  
Managing Director  
29<sup>th</sup> November 2024

## replacing a LED light fixture

Each light fixture can last for up to 50,000 hours but there will come a time when it will need to be replaced. As the light fixture will already be held in position under the curved hood, you will find it easier to do this with the curved canopy sat upside down on a flat surface. Ensuring the power has been turned off, simply follow Step 2 of the assembly instructions in reverse. Lift one edge of the light fixture first to disengage the unit from the ballast clips and the whole unit can then be easily removed. To fit a new light fixture, follow Step 2 of the assembly instructions.

## practical growing advice

To grow successfully from seed, there are three key ingredients - food, light and water. Food and water can be supplied by you, while the Grow Light Garden provides the missing ingredient, thanks to the full spectrum light provided. The Grow Light Garden provides 6400 Kelvin light bringing the perfect balance of white, red, blue, green and yellow light for your plants. What is more, this is provided all year round, even during the dark winter months.

When planting seeds, the canopy can be positioned at its maximum height. Once the seedlings sprout, lower the base of the canopy to about 6cm from the sprouts. This keeps the seedlings short and stubby rather than long and skinny. As the plants continue to grow, keep moving the canopy, maintaining the distance of 6cm.

It is important to remember that darkness is part of the natural growing cycle for plants. Give your plants a rest by turning the lights off for a period of the day. Most vegetables, herbs and garden flowers are 'long day' plants

requiring an average of 16 hours of light per day. 'Short day' plants requiring around 12 hours of light a day include azaleas, poinsettias and begonias. Consider using an automatic timer or simply switch off your lights when you go to bed.

We recommend rotating the Growing Trays once a week as the light is more intense in the centre of the unit than at each end. Clean the LED light fixtures as needed, as dust can significantly reduce the light output.

Be careful not to over water your plants, particularly when they are very young as this can lead to 'damping off' and can kill seedlings. It is better to water little and often. Once plants develop and become established, they will benefit from the addition of a liquid fertiliser. For dosage rates, please refer to the user instructions provided by the manufacturer.

## safety advice

- This product is designed for indoor use only.
- Always turn the power off to the Grow Light Garden when inserting, adjusting, cleaning or removing the LED light fixtures.
- Do not stare directly into the LED lights when illuminated.
- Use the power cord only with a properly grounded electrical outlet.
- If any part of the product displays obvious signs of damage, discontinue its operation.
- If water is spilled near the power source, unplug the unit before you wipe up the water.
- Do not place objects on top of the Grow Light Garden canopy.
- For on/off manual control of the lights, use the switch located on the power cord.

## contents

Thank you for purchasing the Grow Light Garden. The product comprises a height adjustable light canopy which houses two full spectrum LED light fixtures. You can use this product to raise 'cut and come again' salad leaves and herbs all year

round, thanks to the ideal light conditions provided. Keen gardeners can also get a 'head start' by raising early season seedlings for the garden or greenhouse. The four individual growing trays allow for easy succession planting.

## Qty Description

- |   |   |
|---|---|
| 1 | <b>Curved canopy</b>  |
| 1 | <b>Flat base tray</b>   |
| 1 | <b>Self watering platform insert</b>                            |
| 1 | <b>Capillary matting section</b>                                |
| 2 | <b>Aluminium square tube sections</b>                           |
| 2 | <b>Plastic plugs (for aluminium tube sections)</b>              |
| 2 | <b>Height adjuster clamps with black nuts &amp; thumbscrews</b> |
| 4 | <b>Growing trays</b>  |
| 1 | <b>Power cord with on/off switch</b>                            |
| 2 | <b>LED light fixtures</b>                                       |
| 4 | <b>Fixing bolts</b>   |
| 4 | <b>Nuts</b>   |
| 4 | <b>Ballast clips</b>  |



# Assembly Instructions

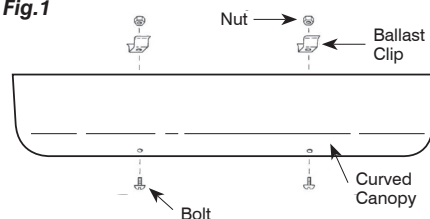


Assembly of this product should take in the region of 30 minutes. The only tools you will require will be a hammer, or preferably rubber mallet, and a crosshead screwdriver. Firstly please check the contents list on the previous page to ensure that you have all the required parts to complete the assembly.

## Step 1 (refer to Fig. 1)

Place the curved canopy upside down on a flat surface. Take a fixing bolt and slot it through one of the holes of the canopy - the head of the bolt should be on same face as the oval branding badge. Slot a ballast clip over the exposed threaded section of the fixing bolt and secure it in place by threading a nut on to the bolt. Tighten so that the mounting clip is securely held in position against the exposed underside of the canopy. Repeat for all 4 mounting clips.

Fig.1



## Step 2 (refer to Fig. 2)

Peel off the protective film from each LED light fixture. Before attempting to locate the LED light fixtures into position, connect the power cord into the exposed sockets at the end of each of the LED light fixtures. Do not plug the power cord into the mains supply yet.

## Step 3 (refer to Fig. 3 & 4)

With the curved canopy upside down on a flat surface, locate each of the LED light fixtures into position by pushing them into the exposed ballast clips. You will find it easier to locate one edge of the LED light fixture into the ballast clips first and then push down on the opposite side, see Fig. 3. When pushing down, apply pressure to the aluminium body, avoiding the clear plastic section which shields the LED lights. Once this step has been completed, the item should look as shown on Fig. 4.

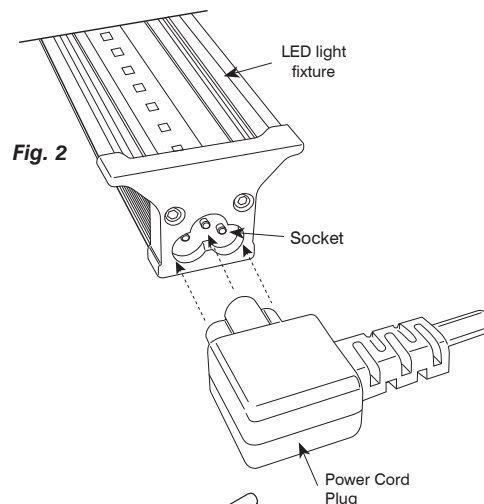


Fig. 3

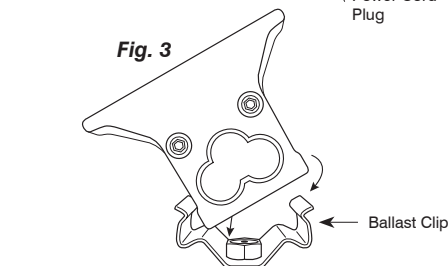
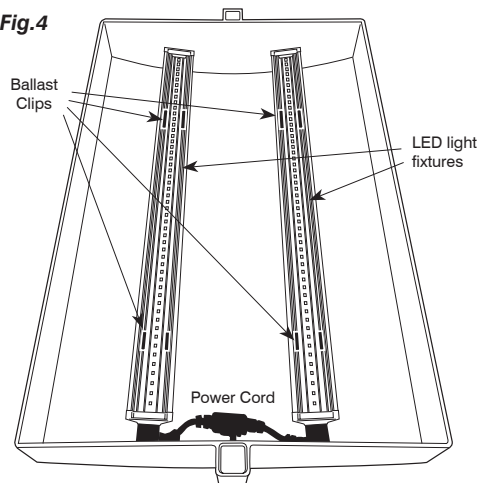


Fig.4



## Step 4 (refer to Fig. 5)

Insert each of the aluminium square tubes into the two slots in the flat base tray. Using a rubber mallet, force the tube into the slot to achieve a firm fix. If a rubber mallet is not available, use a regular hammer but cushion the impact on the end of the tube to prevent the tube profile from becoming damaged.

## Step 5 (refer to Fig. 5 & 6)

Insert the supplied steel black nuts into each of the Height Adjuster Clamps as shown. Slide each of the Height Adjuster Clamps over each of the exposed aluminium tubes and secure at the desired height using the thumbscrews. Be careful not to over tighten the thumbscrews – a soft grip is all that is required. Now slide the canopy section over the exposed tube sections until it is supported by the Height Adjuster Clamps. You can adjust the height of the canopy as required. Finally using the plastic plugs, cap each of the exposed tube sections.

Fig. 5

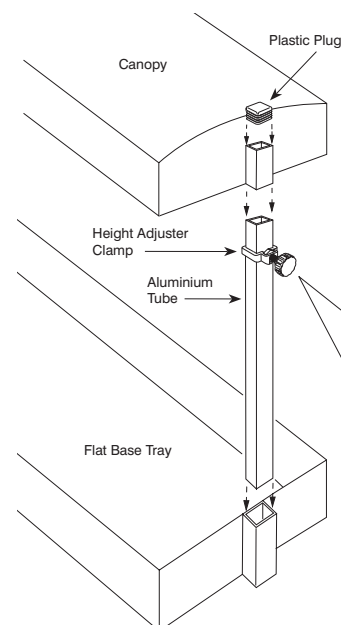
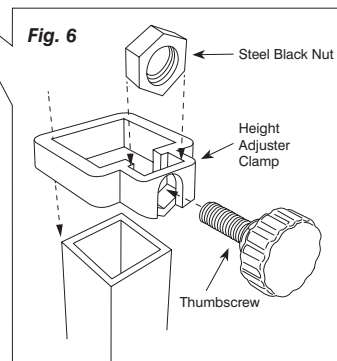


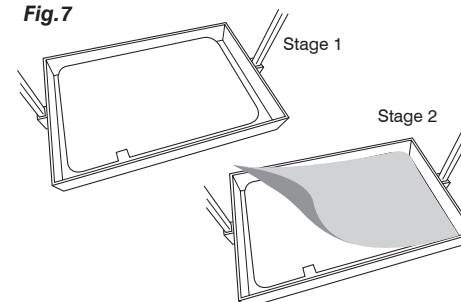
Fig. 6



## Step 6

Connect the power cord to your electrical supply. The unit is now ready for use.

Fig.7



## Step 7 (optional)

Place the Self Watering Platform Insert inside the flat based tray of the Grow Light Garden as shown in Fig. 7. Cover with the Capillary Matting Section, dark side up, draping the excess over one end of the Self Watering Platform Insert only. Place the 4 Growing Trays on top of the Capillary Matting. To 'self water' your plants, pour water directly into the flat based tray, ensuring that the excess capillary matting is in direct contact with the water. The capillary matting will naturally draw water across its entire length. As long as you ensure that the growing mix in your trays is in direct contact with the capillary matting through the 24 holes in the base of each tray, your plants will in turn draw on water by capillary action – see Fig. 8.

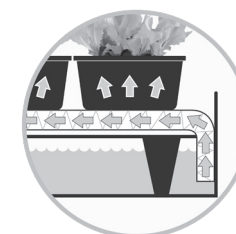


Fig.8

Please note that use of the self watering insert and capillary matting is optional and not essential to healthy plant development.